



# Foundation Investigation Services



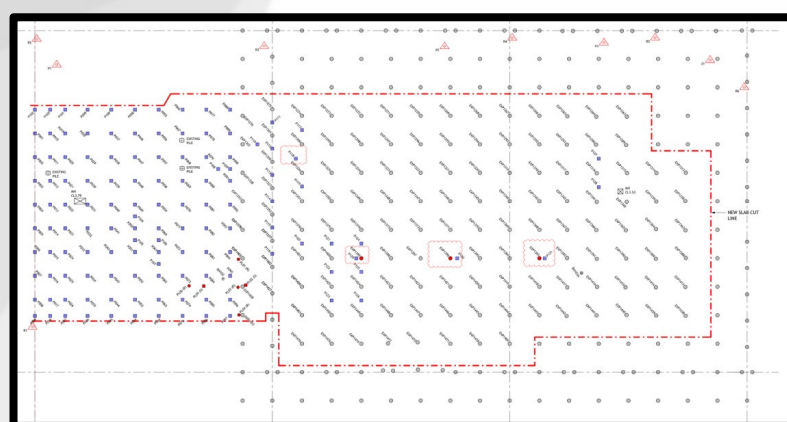
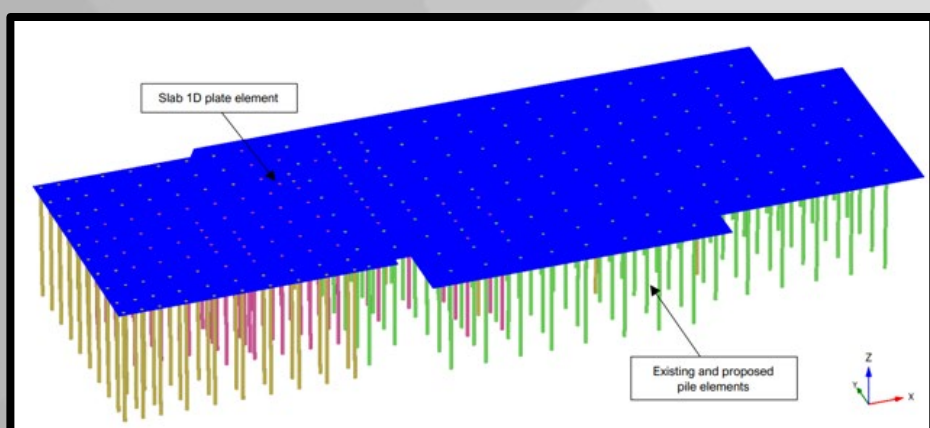
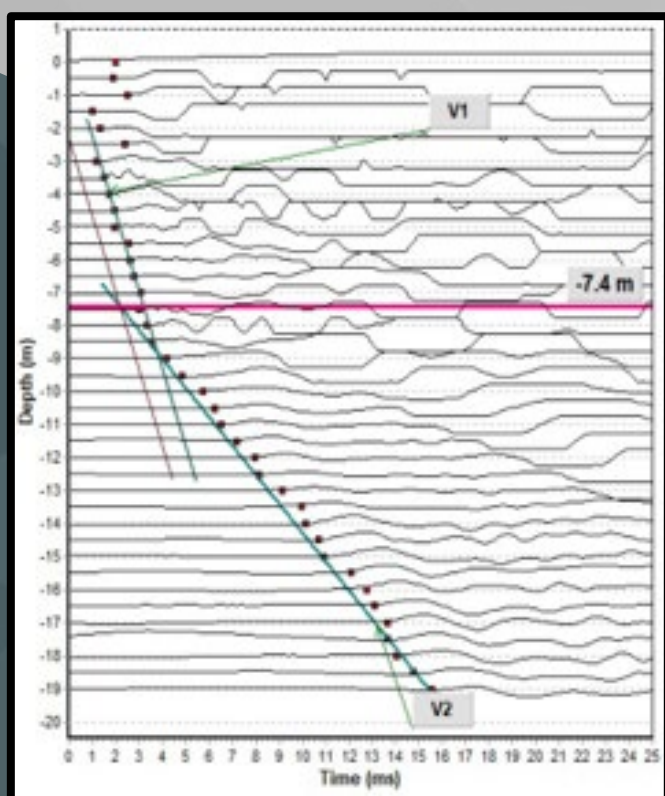
A2 Site Investigation



As we move towards a more sustainable built environment, reusing existing foundations gives the opportunity to greatly reduce the whole life carbon footprint of new developments, and the repurposing of buildings can maximise their original design life.

A2 Site Investigation have developed a wide ranging offering for the investigation of existing foundations and the detailed assessment of reuse viability.

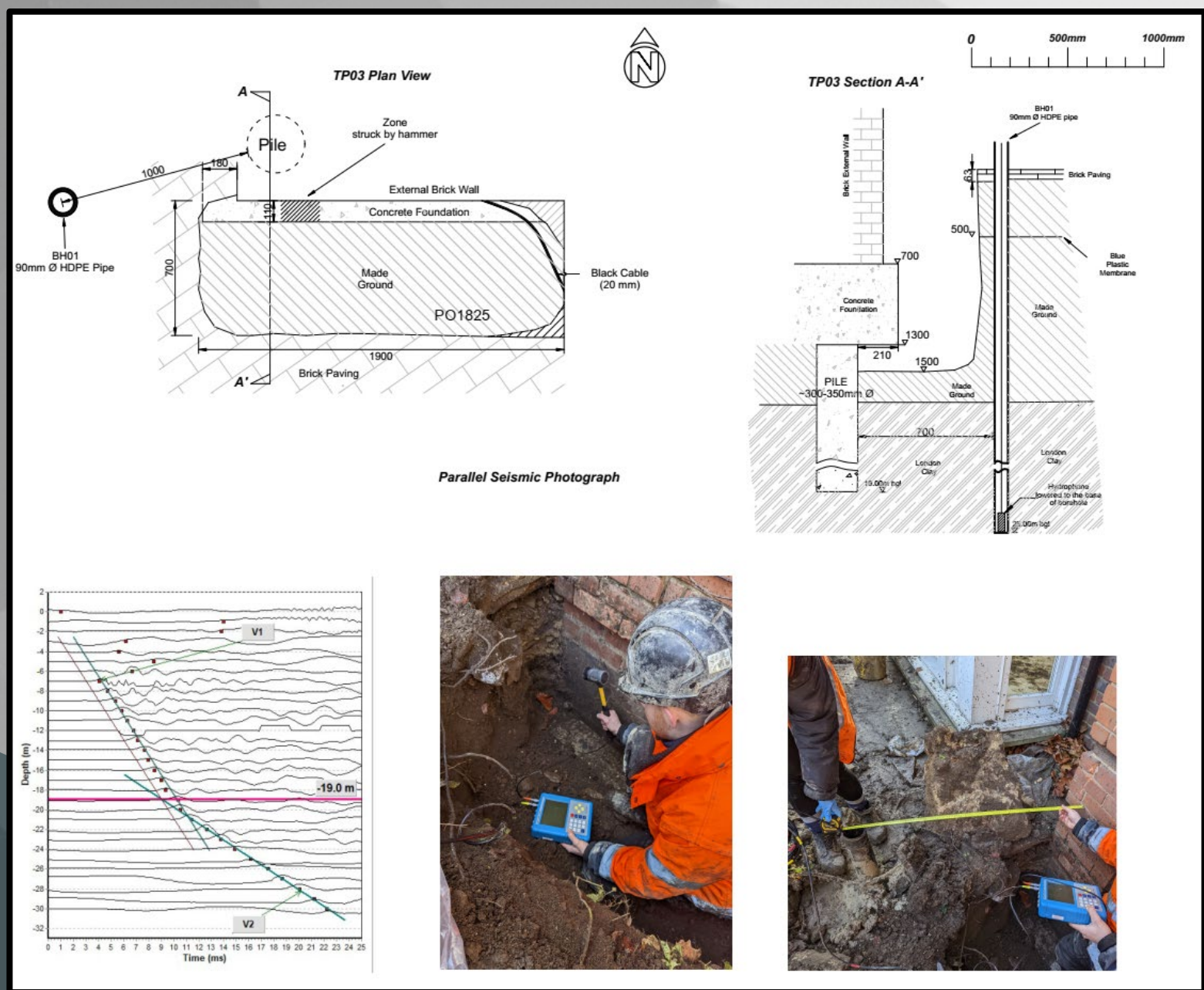
We use a combination of non-destructive geophysical surveying, skilful intrusive works, and laboratory analysis to capture sufficient data to understand the configuration and condition of existing foundations.



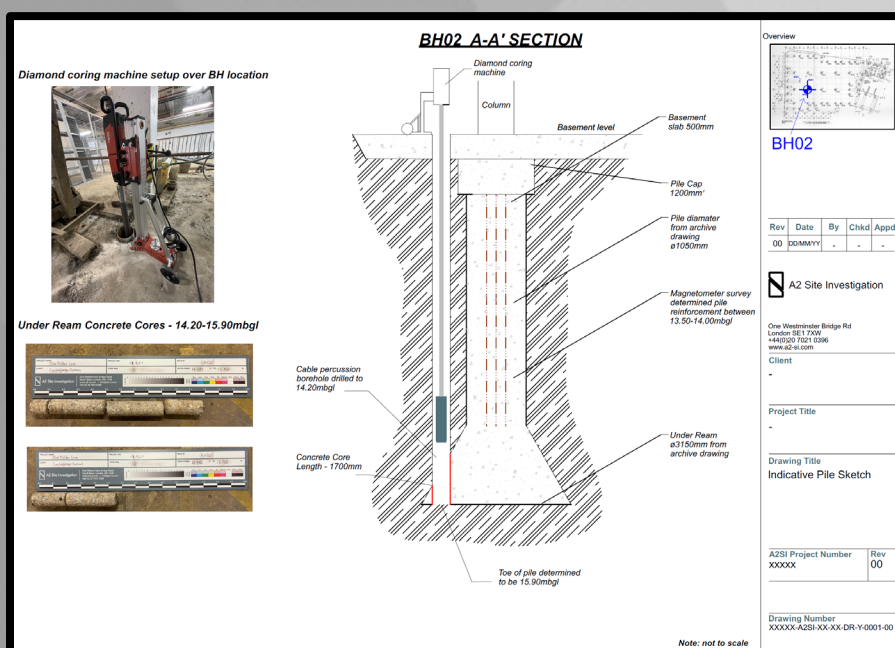
Together with existing ground model data, our consultancy team can assess the viability of foundation reuse and present anticipated additional settlements from the increased loading.







Where pile length data is required, our engineers use parallel seismic analysis to record the speed of P Wave arrival through the pile element. The seismic waves are generated by striking the foundation with an instrumented hammer and captured by an hydrophone receiver positioned in an adjacent test borehole.



Where required, intrusive techniques can be used such as pile probing and coring, to confirm pile lengths and recover samples for detailed inspection and laboratory analysis.

This can include both concrete and reinforcement steel to assess current condition, and provide information on strength and durability.







A2SI-ADM-005-00



One Westminster Bridge Road  
South Bank  
London SE1 7XW  
020 7021 0396  
  
[contact@a2-si.com](mailto:contact@a2-si.com)  
[www.a2-si.com](http://www.a2-si.com)







# Foundation Investigation Services



A2 Site Investigation