



# Ground Investigation Services



A2 Site Investigation



A2 Site Investigation are a team of professional engineers, project managers and technical personnel with significant ground and structural investigation experience.

Our close collaborative approach ensures successful delivery of all projects, and we achieve this with best practice and safe, state of the art investigation methods.

A deep understanding of the ground and the geological, geotechnical and environmental risks to construction allows our team to design the very best value engineered solutions for our clients.

We are committed to providing high quality site investigations to support the design and development of buildings, infrastructure and spaces across the UK and Europe. From house extensions, basements and modern art sculptures, to tall buildings and tunnels, A2SI can provide the expertise and support needed to ensure successful project outcomes.

Our services include:

- Cable Percussion Drilling
- Rotary Drilling
- Dynamic Sampling
- Restricted Access Drilling
- Trial Pits
- Structural Investigations
- Laboratory Testing
- Geotechnical & Geoenvironmental Monitoring



## The A2SI Difference

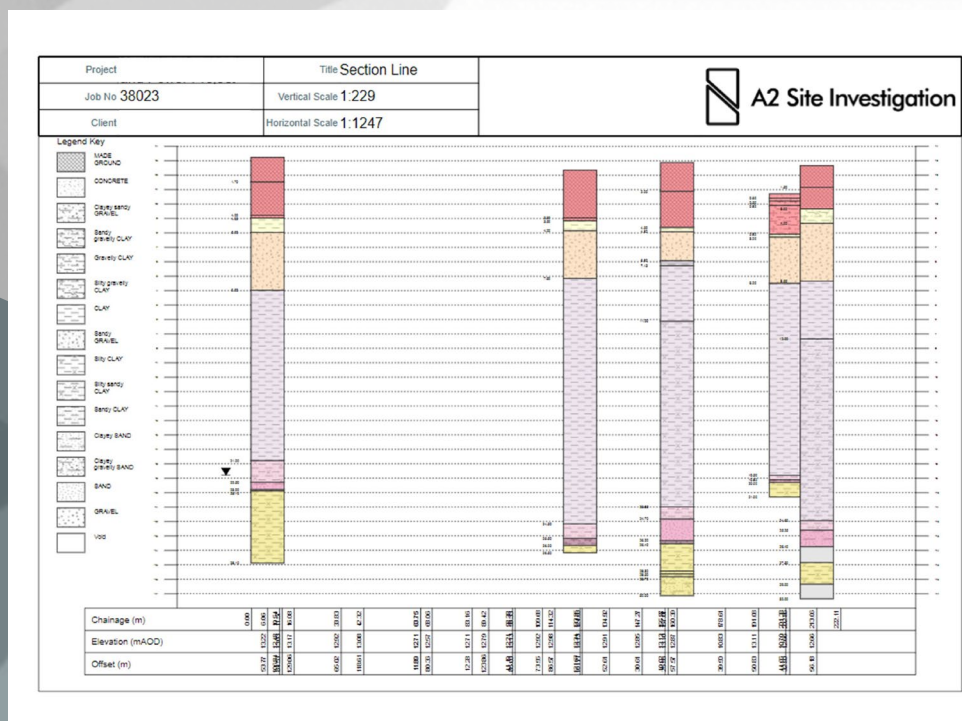
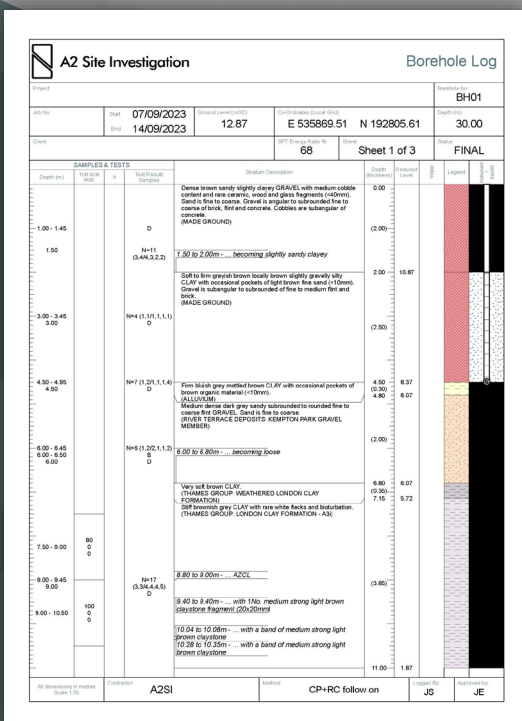
We operate an extensive range of specialist plant and equipment, which allows us to safely and successfully perform investigative works in the most challenging environments.

We are often engaged at an early project stage, so we can provide advice on the techniques available to recover the necessary design data for any project, big or small.





Our company has been built to offer the very best in site investigation services that will continually provide our clients with safe, efficient and cost-effective solutions.



A2SI can offer a range of specialist testing and monitoring services including; gas vapour and groundwater, pressuremeter, CPT, packer testing and geophysical surveys.

We work with a number of partner laboratories across the UK to provide a comprehensive range of routine and advanced geotechnical, environmental & materials testing services.







A2SI-BD-001-02



100 Westminster Bridge Road  
South Bank  
London SE1 7XA  
020 7021 0396  
  
contact@a2-si.com  
www.a2-si.com

